

## Non-hardening multi-purpose putty that can even be used under running water.



Effective for various leakage problems and flood prevention measures in construction, civil engineering, and utility work! Versatile putty that does not harden indefinitely. Waterproofing with conventional hardening putty is outdated! To combat the "water channels" created over time by hardening and shrinkage, we recommend using the "non-hardening" TOMETARO putty to stop the water!



Backing material  
(Water absorbent sponge)  
**SUTARO**

A perfect companion on construction sites to prevent all types of leaks!

5kg Separate cup

1kg Separate cup

### Features of TOMETARO

- 1 It can be filled under running water**
- 2 Easy to fill/remove as it does not harden**

TOMETARO is a single-component putty developed for a variety of leakage problems. It is highly viscous and completely seals leaking water. **The product alone can withstand a water pressure of 0.05 Mpa** (depending on fill thickness and size).

Because **it does not harden** indefinitely, there is no resin-specific hardening and shrinkage, and it retains its shape even after filling, preventing the formation of "water channels" that cause new water leaks. With standard installation, no separate filler for curing is required, and is **easy to remove and reuse**

- 3 Flexible to changes in sealing surface temperature**
- 4 "Made in Japan" QUALITY**

It is flexible to changes in the surface temperature of the object to be filled, and in particular, its **heat resistance of +90°C** ensures safety even when the temperature of the sheath of electrical (communication) cables in conduits increases.

It has **no thermal degradation** typical of resins and is recommended for waterproofing and sealing applications.

It is **completely made in Japan**. It does not cause "hydrolysis", which occurs when the contents react with water, and there is **no need to worry about the putty melting and flowing out**.

It is a product that can be used continuously even after opening the package, and can be stored in the shade, **so there is no need to change the stock every season**.



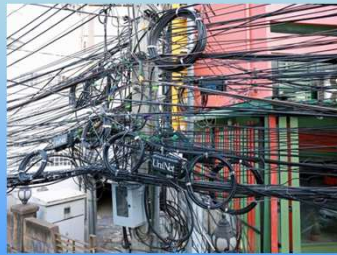
## Various applications of Tometaro Putty Agent

### (1) Preparation for flooding before the heavy rain



Tometaro prevents flooding of the city from torrential rains and helps to relieve traffic congestion.

### (2) Support undergrounding of power lines



This is a necessity for undergrounding of electric lines. Protects electric lines from leakage and prevents electrical accidents.

### (3) Water leakage prevention



For unexpected leaks. Non-hardening waterproof putty that can be filled even under flowing water. TOMETARO is an essential product for construction sites.

### (4) Measures to control pest outbreaks and pest infestations



Tometaro doesn't create puddles of water, so it doesn't cause insects. Furthermore, it prevents harmful rodents from entering the building.

## Specific construction of Tometaro Putty



(1) It can be used for various materials such as plastic, rubber, metal, and concrete. Pre-fill underground piping and through holes.



(2) Its high heat resistance enables it to withstand the temperature of high-voltage wires and extend the service life of the wires. Be sure to fill it during installation.



(3) If you have a leak problem, Tometaro will help you. Always be prepared during construction work.



(4) Tometaro is safe for people and the environment. Fill Tometaro in various unsanitary places. Prevents rodent infestation.

## Key specifications of Tometaro Putty

Item	Description
Appearance [properties]	Gray [putty-like]
Specific gravity	1.8
Material	Polyolefin based
Water-tightness (our company's tests)	0.05MPa
Heat resistance (easy installation temperature range)	-20 to 90°C [20 to 35°C]

Product name	Quantity (included items)
TOMETARO 10 kg Box	5 kg × 2 cups ※
8 kg Box	1 kg × 8 cups ※
※ 5kg Separate cup	Vinyl gloves, work gloves, instruction manual
※ 1kg Separate cup	Vinyl gloves, instruction manual
Backing material, SUTARO (Box)	Water absorbent sponge type 1,000 mm (box of 10 pieces)

■ Guideline of usage amount In the case of TOMETARO 5 kg cup ■

(Example) Gap between body and piping (when filled by 50 mm)

Opening diameter	Pipe diameter	Number of installation points
100mm	50mm	8
125mm	75mm	6
150mm	100mm	5
175mm	125mm	4
200mm	150mm	3

※The amount of putty for electrical conduit filling varies depending on the conduit fill percentage.

Please use the TOMETARO Usage Calculator on the following website.

(Note) We recommend 2-layer filling of "backing material + TOMETARO", but there are cases where a separate finishing material may be required depending on the filling location and use. Please feel free to contact us for details

TOMETARO is a registered trademark of EPJ INC.



- When using this product, please read the enclosed instruction manual carefully and prepare the necessary items for filling in advance. Tometaro has been developed mainly for its waterproofing performance and has a high viscosity. Please prepare water and wet your work gloves while filling.
- Tometaro is designed for installation in a dark place. Do not install Tometaro in a place where it is exposed to direct sunlight.

Dealer

Manufactured / Distributed by

**EPJ INC.**

903 THE HUB Nihombashi Kabutocho,9-5 Kabutocho,Nihombashi, Chuo-ku, Tokyo 103-0026 Japan  
Tel +81-3-5643-8137 Fax +81-3-5643-8138 Mail info@epj-inc.co.jp

Please also visit the TOMETARO page on our website !

<https://www.epj-inc.co.jp>